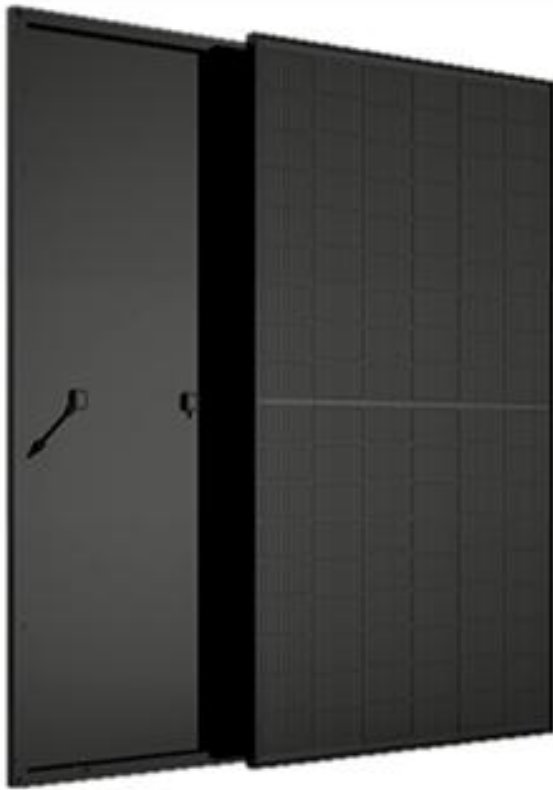


Monocrystalline PV Module
FYSTSMH108P Series (182)



SMBB technology, higher component power



Guaranteed 0~+5W positive tolerance to ensure power output



Dual stage 100% EL Inspection



Lower power attenuation higher generation returns



Excellent PID resistance



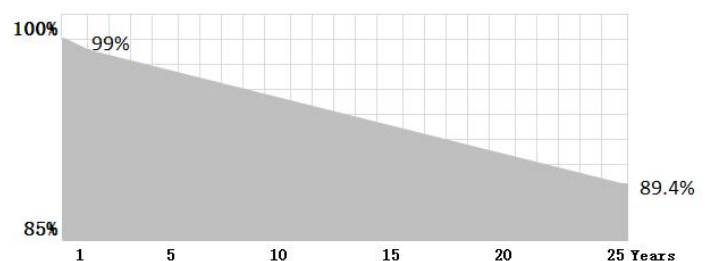
Reduced surface reflection and self-cleaning

Comprehensive Certificates

- IEC61215, IEC61730
- TUV, CE
- ISO9001: 2015
- ISO14001: 2015
- ISO45001: 2018

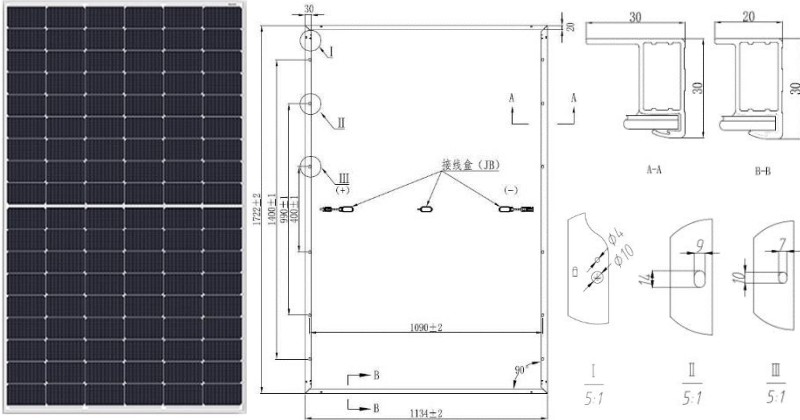


Superior Warranty



Mechanical Specifications @STC

Solar Cells:	Mono
Number of Cells:	108pcs
Module:	1722×1134×30mm
Weight:	21 kg±3%
Snow/Wind Load:	5400/2400 Pa
Thickness of Glass:	dual 3.2mm
Junction Box:	IP68, 3 Diodes
Connector:	HTC-16,
IP68	
Length:	(+)250mm /(-)300mm(including connector)



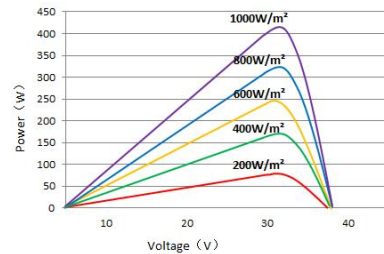
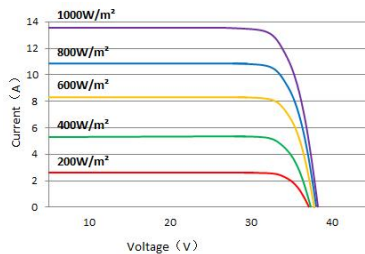
Electrical Specifications @STC

P _{max} (W) 0~5W	U _{mpp} (V)	I _{mpp} (A)	U _{oc} (V) ±3%	I _{sc} (A) ±3%	Module Efficiency	Max System Voltage	Max Series Fuse
410	32.32	12.69	38.69	13.50	21.00%	1500V	25A
415	32.62	12.72	39.05	13.53	21.25%	1500V	25A
420	32.76	12.82	39.21	13.62	21.51%	1500V	25A

Temperature Parameter

Temperature Cycling Range:	-40°C ~ +85°C
Norminal Module Operating Temperature:	45±2 °C
Temperature Coefficient of I _{sc} :	0.037%/°C
Temperature Coefficient of V _{oc} :	-0.255%/°C
Temperature Coefficient of P _{max} :	-0.337%/°C

I-V Curve FYSTSMH108P-420W



Packaging Configuration

Modules Per Pallet:	36pcs
Modules Per 40' HQ:	936pcs

Guarantee

12-year warranty on materials & workmanship
25-year linear power output warranty

※ Specifications subject to technical changes and tests, Fuyesen Power reserves the right of final interpretation.