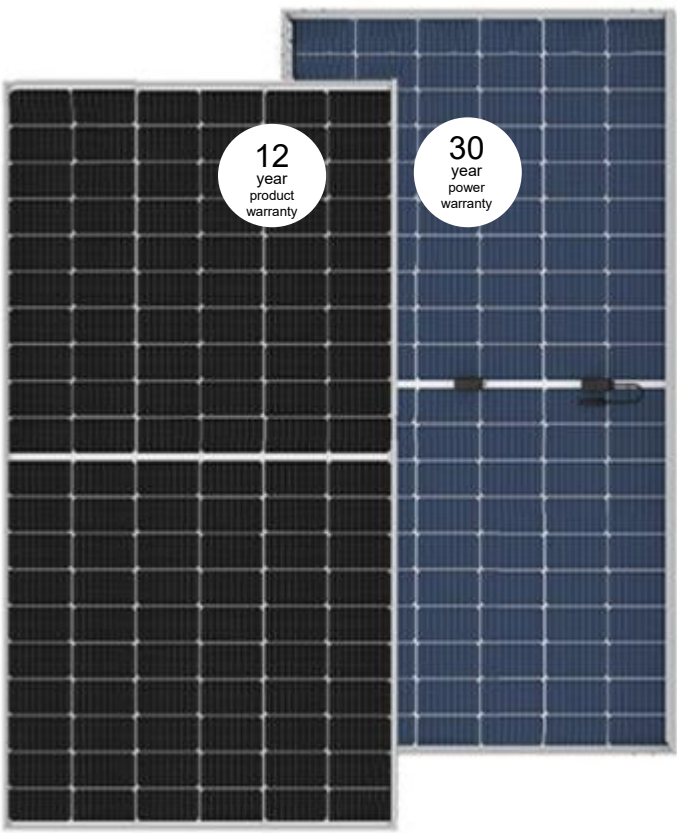


Monocrystalline PV Module  
FYSDMH120P Series (166)



MBB & Half Cut cell technology



Guaranteed 0~+5W positive tolerance to ensure power output



Dual stage 100% EL Inspection Warranting Defect-Free Product



Less hot spot & shading effects



Excellent mechanical load 2400Pa and snow load 5400Pa resistance



Lower BOS cost and LCOE



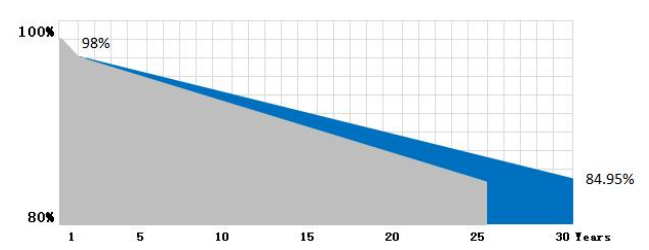
Excellent PID resistance.

## Comprehensive Certificates

- IEC61215, IEC61730
- TUV, CE
- ISO9001: 2015
- ISO14001: 2015
- ISO45001: 2018

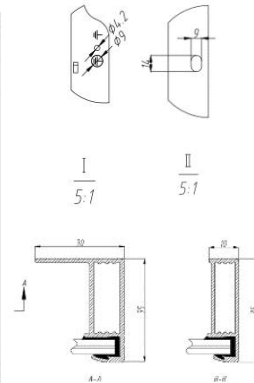
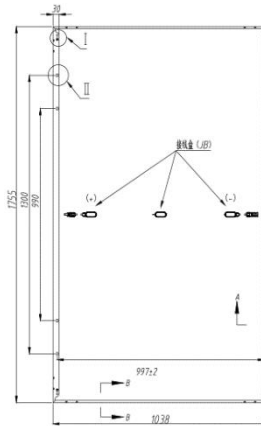


## Superior Warranty



## Mechanical Specifications @STC

Solar Cells:	Mono
Number of Cells:	120pcs
Module Dimension:	1755×1038×35mm
Weight:	23 kg
Snow/Wind Load:	5400/2400 Pa
Thickness of Glass:	Dual Glass 2mm
Junction Box:	IP68, 3 Diodes
Connector:	HTC-16, IP68



## Electrical Specifications @STC

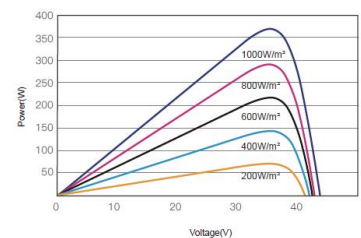
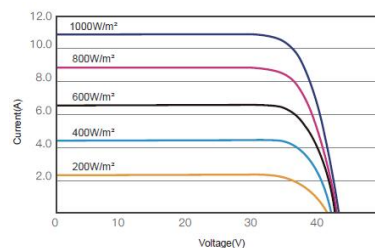
P <sub>max</sub> (W) 0~5W	U <sub>mpp</sub> (V)	I <sub>mpp</sub> (A)	U <sub>oc</sub> (V) ±3%	I <sub>sc</sub> (A) ±3%	Module Efficiency	Max System Voltage	Max Series Fuse	Bifacial Gain 5% (W)	Bifacial Gain 15% (W)	Bifacial Gain 25% (W)
355	33.39	10.65	40.54	11.17	19.49%	1500V	20A	372	408	443
360	33.63	10.73	40.81	11.25	19.76%	1500V	20A	378	414	450
365	33.87	10.79	41.09	11.32	20.04%	1500V	20A	383	419	456
370	34.08	10.88	41.31	11.41	20.31%	1500V	20A	388	425	462
375	34.26	10.95	41.54	11.50	20.59%	1500V	20A	393	431	468

## Temperature Parameter

Temperature Cycling Range:	-40°C ~ +85°C
Norminal Module Operating Temperature:	45±2 °C
Temperature Coefficient of I <sub>sc</sub> :	0.028%/°C
Temperature Coefficient of Voc :	-0.302 %/°C
Temperature Coefficient of P <sub>max</sub> :	-0.414%/°C

## I-V Curve

## FYSDMH120P-370W



## Packaging Configuration

Modules Per Pallet:	31pcs
Modules Per 40' HQ:	806pcs

## Guarantee

12-year warranty on materials & workmanship  
30-year linear power output warranty

\* Specifications subject to technical changes and tests, Fuyesen Power reserves the right of final interpretation.